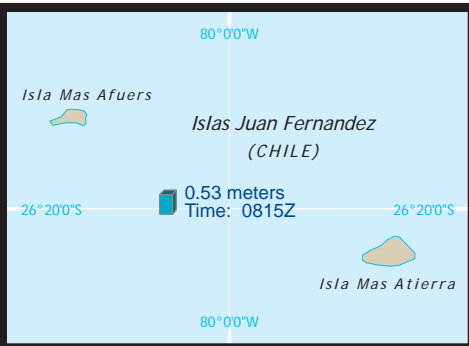


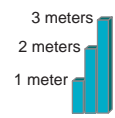
# EARTHQUAKE-AFFECTED AREAS IN CHILE AND ARGENTINA



**KEY**

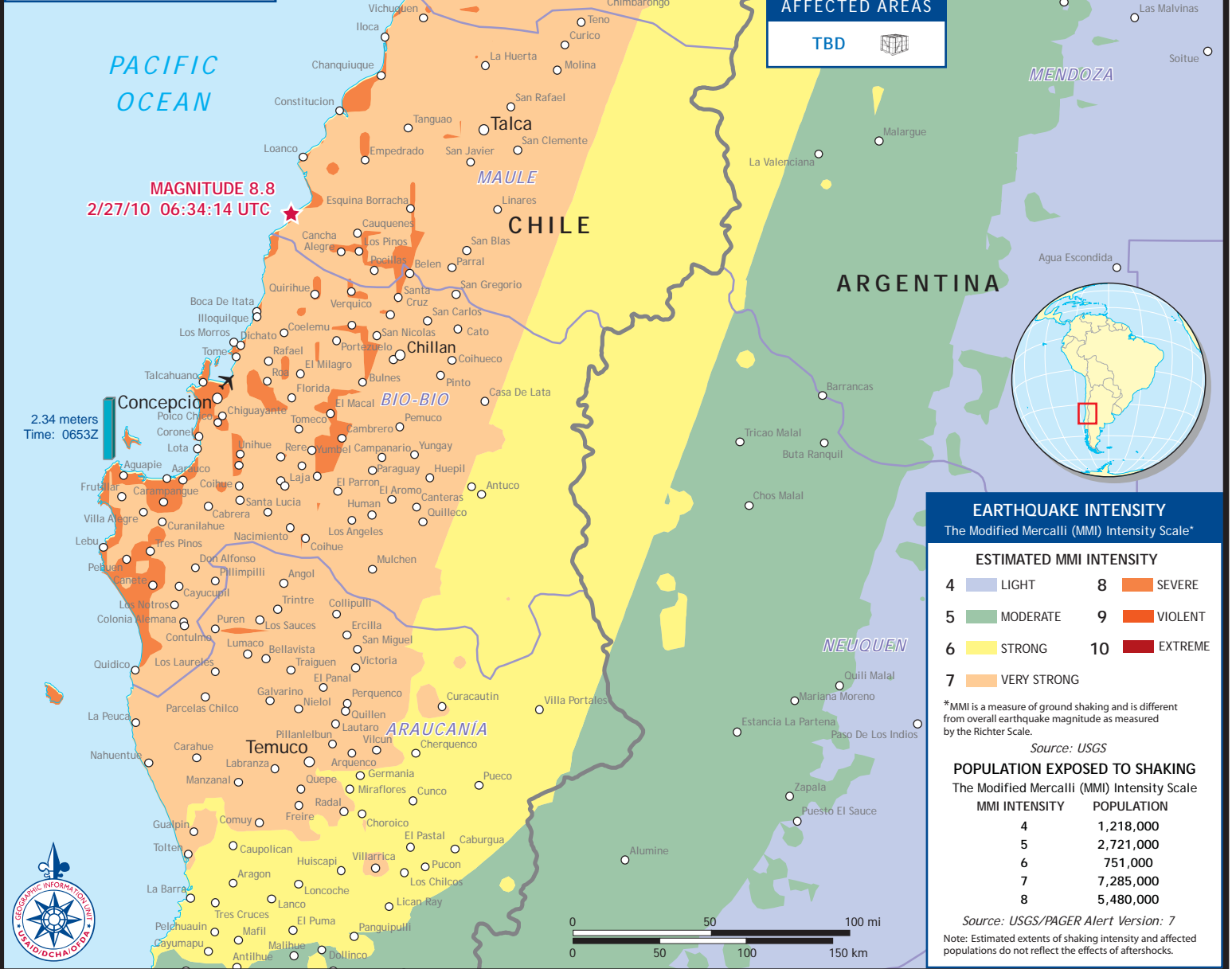
**USAID/OFDA**  
EMERGENCY RELIEF SUPPLIES  
03.02.10

**WAVE HEIGHT**



3 meters  
2 meters  
1 meter

SOURCE: Pacific Tsunami Warning Center/NOAA/NWS, Tsunami Bulletin No. 27  
02/28/10



# Satellite Imagery Observations

## Chile Earthquake and Tsunami - Bay of Concepción

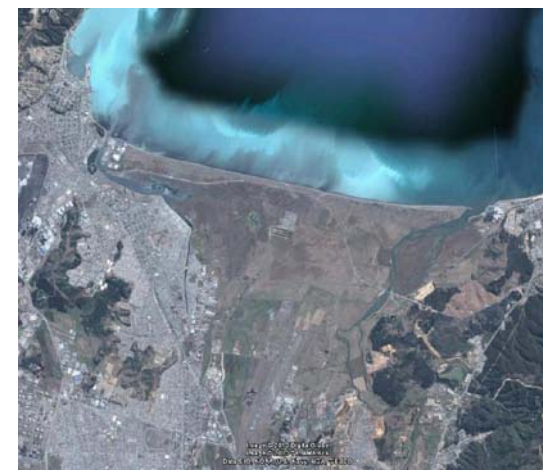
Image shows coastal inundation and floating debris.



**USAID**  
FROM THE AMERICAN PEOPLE

36°44'50.47"S 73° 3'24.30"W

### Pre-Event Imagery



### Locator Map



Copyright Rapideye 2010  
Imagery Date: 2/27/2010

Produced by: Geographic Information Unit  
Office of Foreign Disaster Assistance  
U.S. Agency for International Development  
Imagery provided by Google & Geoeye  
Post Event Image Date: February 27, 2010  
Pre Event Image Date: Unknown  
GLIDE #: TS-2010-000035-CHL  
Produced: March 2, 2010